

Overlevelsen ved cancer mammar

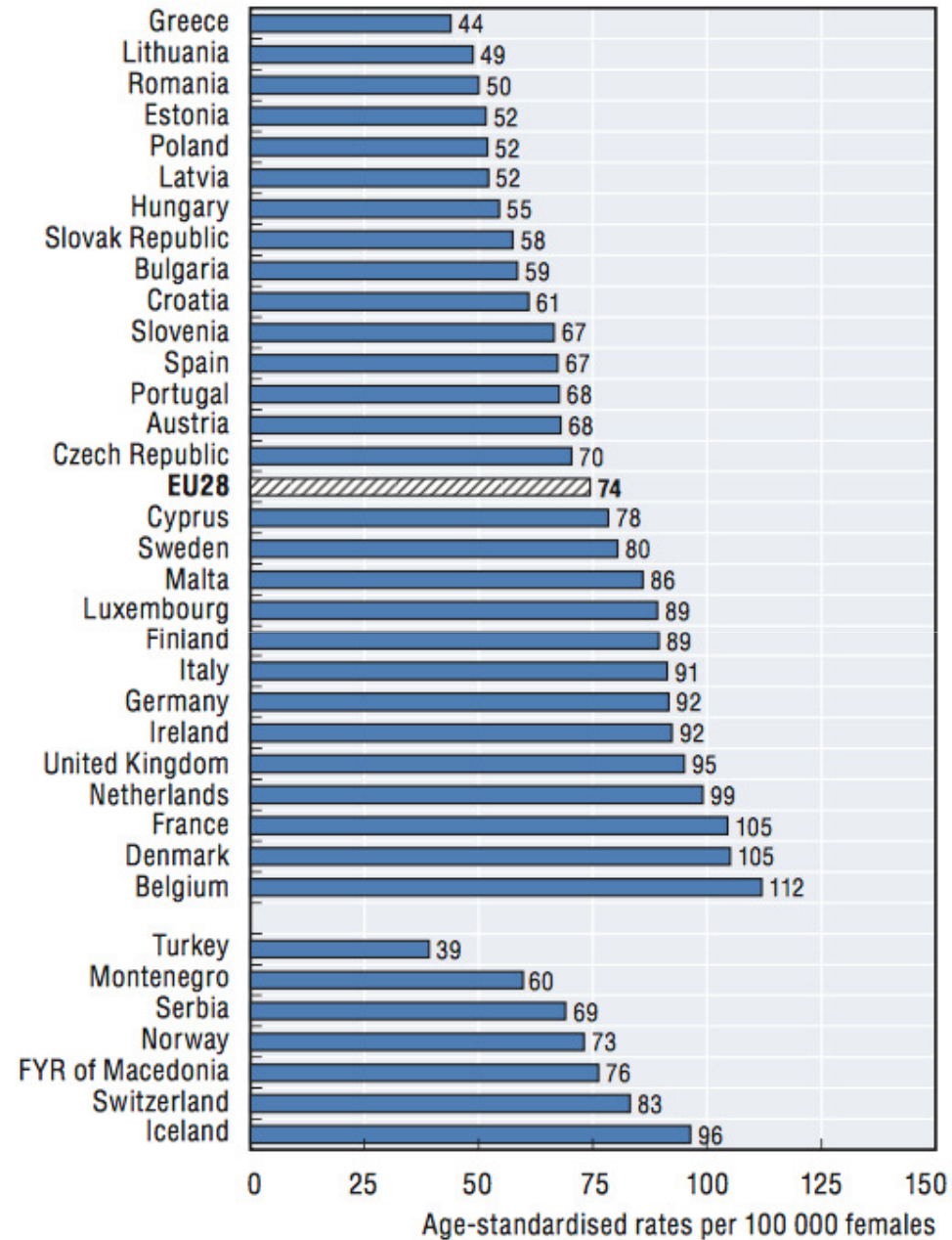
Peer Christiansen



Health at a Glance: Europe 2014

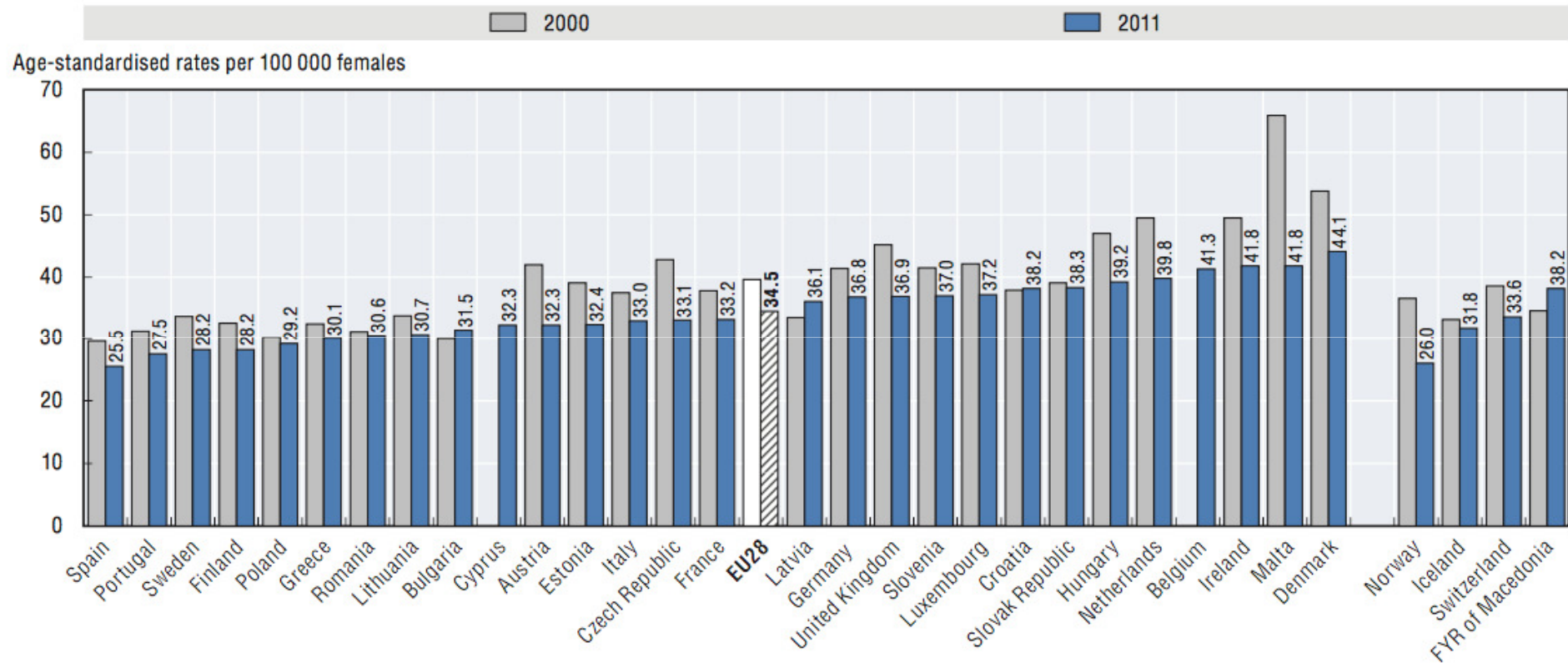


1.13.2. Breast cancer incidence rates, women, 2012




Source: International Agency for Research on Cancer (IARC), GLOBOCAN 2012.

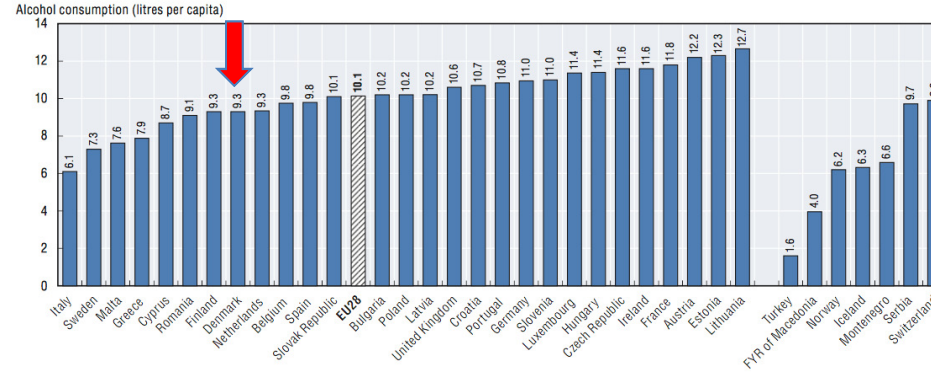
4.7.3. Breast cancer mortality, females, 2000 to 2011



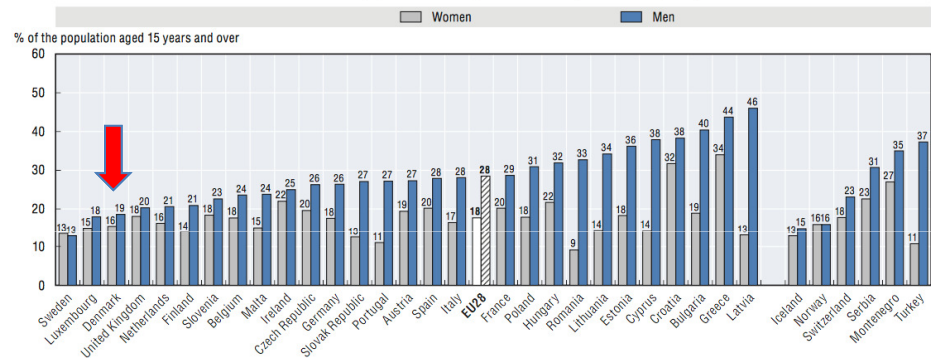
Source: Eurostat Statistics Database.

StatLink  <http://dx.doi.org/10.1787/888933155729>

2.2.1. Alcohol consumption among population aged 15 years and over, 2012 (or nearest year)

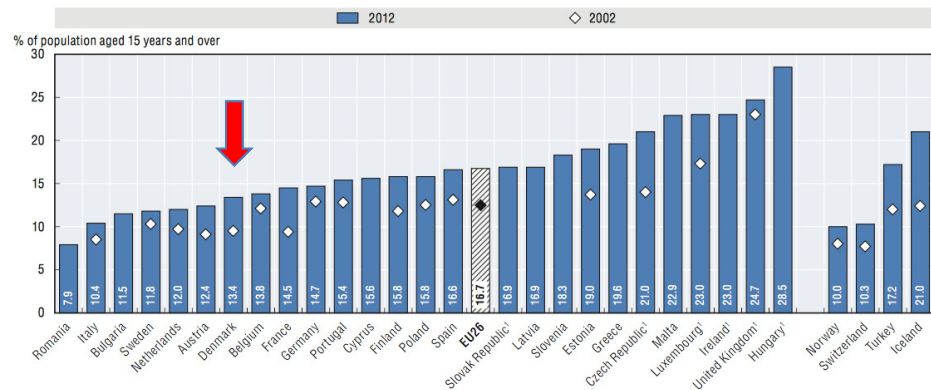


2.1.2. Gender gap in smoking rates, 2012 (or nearest year)



Source: OECD Health Statistics 2014, <http://dx.doi.org/10.1787/health-data-en> completed with Eurostat Database (EHIS) and WHO Europe Health for All Database.

2.5.1. Prevalence of obesity among adults, 2002 and 2012 (or nearest years)



1. Data are based on measured rather than self-reported height and weight.
 Source: OECD Health Statistics 2014, <http://dx.doi.org/10.1787/health-data-en> completed with Eurostat Statistics Database.

DMCG.dk Benchmarking Consortium

Kapitel 1: Brystkræft 1995-2012

Danske Multidisciplinære Cancer Grupper (DMCG.dk)
Danish Breast Cancer Cooperative Group (DBCG)

Canceroverlevelse i DK

DMCG.dk Benchmarking Consortium

- Brystkræft
- Tyktarmskræft
- Lungekræft
- Æggestokskræft

RKKP og DMCg.dk

Table 1: Patient characteristics

	1995-1999		2000-2004		2005-2009		2010-2012		1995-2012	
No of patients	15753		18039		21308		13742		68842	
Median age	60		61		62		63		62	
	N	%	N	%	N	%	N	%	N	%
Age										
15-44	1688	11	1818	10	1890	9	1201	9	6597	10
45-54	3813	24	3936	22	3926	18	2688	20	14363	21
55-64	3960	25	5017	28	6669	31	3743	27	19389	28
65-74	3444	22	3739	21	5045	24	3611	26	15839	23
75+	2848	18	3529	20	3778	18	2499	18	12654	18
M-status										
M0	15489	98	17714	98	20885	98	13473	98	67561	98
M1	264	2	325	2	423	2	269	2	1281	2
Nodal Status										
N-negative	7708	49	8214	46	9871	46	6958	51	32751	48
N-positive	6343	40	7970	44	9139	43	5054	37	28506	41
Unknown	1298	8	1337	7	1500	7	1231	9	5366	8
LABC	140	1	193	1	375	2	230	2	938	1
DM	264	2	325	2	423	2	269	2	1281	2
CCI										
0	13207	84	14204	79	16259	76	10316	75	53986	78
1	1467	9	2159	12	2821	13	1969	14	8416	12
2	735	5	1063	6	1293	6	863	6	3954	6
3+	344	2	613	3	935	4	594	4	2486	4

Table 2. Overall survival (95% CI)

		1995-1999	2000-2004	2005-2009	2010-2012	1995-2012
Median follow-up		16 yrs. 6 mo's	11 yrs. 8 mo's	6 yrs. 4 mo's	2 yrs. 10 mo's	8 yrs. 8 mo's
	Year					
	1	0.94 [0.94;0.94]	0.95 [0.94;0.95]	0.95 [0.95;0.95]	0.96 [0.96;0.96]	95 [0.95;0.95]
	5	0.70 [0.69;0.71]	0.74 [0.73;0.74]	0.77 [0.76;0.77]		75 [0.74;0.75]
	10	0.51 [0.50;0.52]	0.56 [0.55;0.56]			
	Age					
15-44	1	0.98 [0.98;0.99]	0.98 [0.98;0.98]	0.99 [0.99;0.99]	0.99 [0.99;0.99]	99 [0.99;0.99]
	5	0.79 [0.78;0.79]	0.87 [0.86;0.87]	0.89 [0.88;0.89]		86 [0.85;0.86]
	10	0.68 [0.67;0.68]	0.77 [0.76;0.78]			
45-54	1	0.98 [0.97;0.98]	0.98 [0.98;0.98]	0.99 [0.98;0.99]	0.99 [0.98;0.99]	98 [0.98;0.98]
	5	0.83 [0.83;0.84]	0.87 [0.86;0.87]	0.90 [0.90;0.90]		87 [0.87;0.88]
	10	0.73 [0.73;0.74]	0.78 [0.78;0.79]			
55-64	1	0.96 [0.96;0.97]	0.97 [0.97;0.97]	0.99 [0.98;0.99]	0.99 [0.99;0.99]	0.98 [0.98;0.98]
	5	0.79 [0.79;0.80]	0.83 [0.82;0.83]	0.88 [0.88;0.89]		0.85 [0.85;0.85]
	10	0.65 [0.64;0.65]	0.70 [0.70;0.71]			
65-74	1	0.95 [0.94;0.95]	0.96 [0.96;0.96]	0.96 [0.96;0.96]	0.97 [0.97;0.98]	0.96 [0.96;0.96]
	5	0.72 [0.71;0.73]	0.77 [0.76;0.77]	0.80 [0.79;0.80]		0.78 [0.77;0.78]
	10	0.52 [0.51;0.53]	0.57 [0.56;0.58]			
75+	1	0.89 [0.88;0.89]	0.89 [0.88;0.89]	0.88 [0.88;0.89]	0.91 [0.90;0.91]	0.89 [0.89;0.89]
	5	0.53 [0.52;0.54]	0.55 [0.54;0.56]	0.56 [0.55;0.57]		0.55 [0.54;0.55]
	10	0.25 [0.24;0.26]	0.28 [0.27;0.29]			

Table 2A. Overall survival (95% CI)

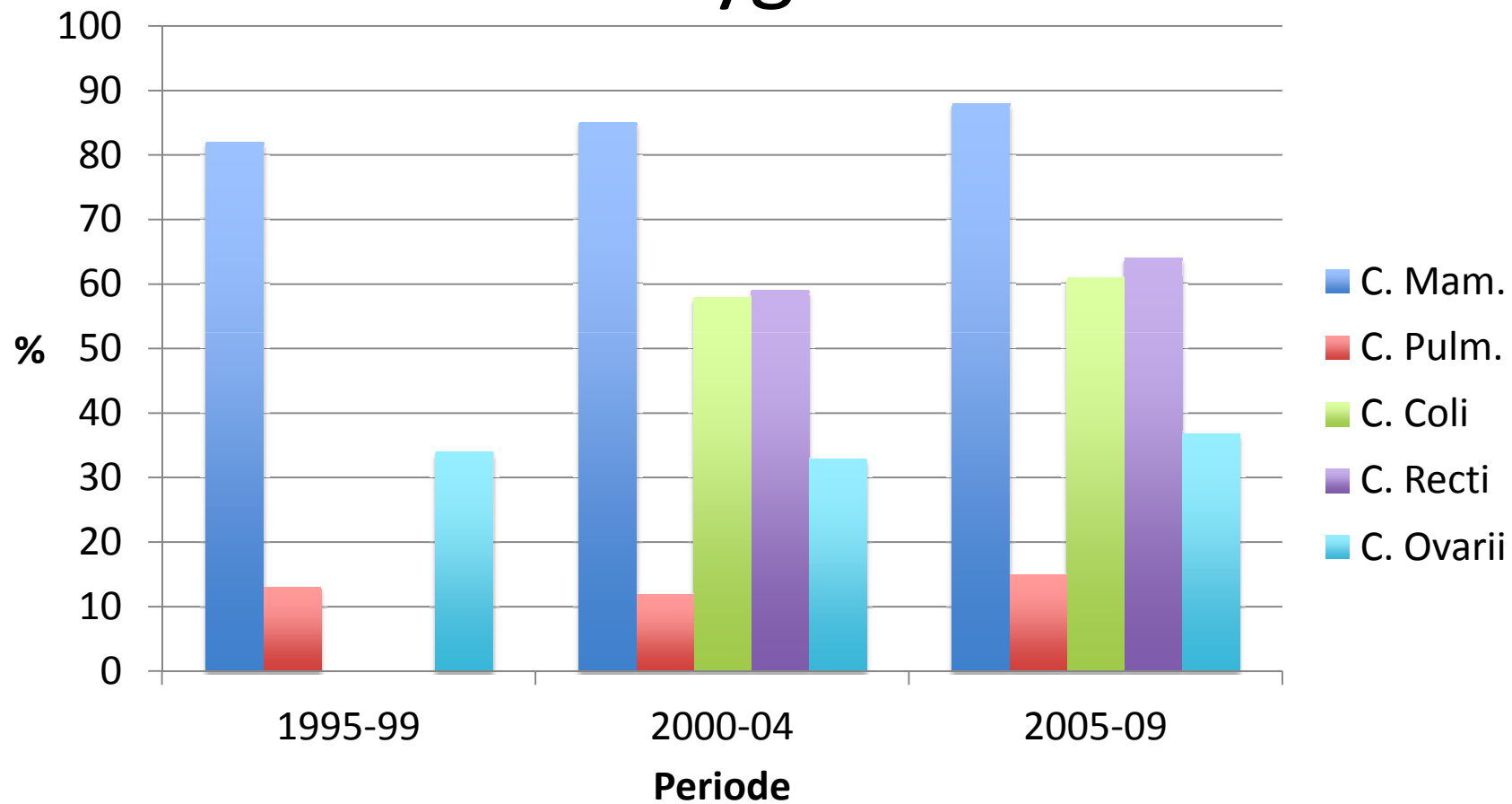
		1995-1999	2000-2004	2005-2009	2010-2012	1995-2012
Nodal Status						
N-negative	1	0.97 [0.97;0.98]	0.98 [0.97;0.98]	0.99 [0.98;0.99]	0.99 [0.98;0.99]	0.98 [0.98;0.98]
	5	0.81 [0.80;0.82]	0.84 [0.83;0.85]	0.87 [0.86;0.88]		0.85 [0.84;0.85]
	10	0.63 [0.62;0.64]	0.67 [0.66;0.68]			
N-positive	1	0.93 [0.93;0.94]	0.95 [0.94;0.96]	0.96 [0.96;0.97]	0.97 [0.96;0.98]	0.95 [0.95;0.96]
	5	0.62 [0.61;0.63]	0.69 [0.68;0.70]	0.75 [0.74;0.76]		0.71 [0.70;0.71]
	10	0.41 [0.40;0.43]	0.49 [0.48;0.50]			
Unknown	1	0.84 [0.81;0.87]	0.82 [0.78;0.85]	0.84 [0.82;0.87]	0.88 [0.86;0.90]	0.85 [0.84;0.87]
	5	0.52 [0.47;0.56]	0.47 [0.43;0.51]	0.54 [0.51;0.57]		0.54 [0.52;0.56]
	10	0.34 [0.30;0.38]	0.30 [0.26;0.34]			
LABC	1	0.77 [0.71;0.83]	0.74 [0.67;0.80]	0.81 [0.77;0.85]	0.86 [0.80;0.90]	0.80 [0.77;0.82]
	5	0.28 [0.22;0.35]	0.28 [0.22;0.35]	0.41 [0.36;0.46]		0.35 [0.32;0.39]
	10	0.17 [0.12;0.23]	0.13 [0.09;0.19]			
DM	1	0.68 [0.64;0.73]	0.60 [0.54;0.66]	0.69 [0.65;0.73]	0.77 [0.71;0.82]	0.66 [0.63;0.69]
	5	0.19 [0.16;0.24]	0.21 [0.17;0.26]	0.22 [0.18;0.26]		0.22 [0.20;0.25]
	10	0.09 [0.07;0.13]	0.09 [0.06;0.13]			

Table 4. Relative survival (95% CI).

		1995-1999	2000-2004	2005-2009	2010-2012	1995-2012
Year						
	1	0.97 [0.96;0.97]	0.97 [0.97;0.98]	0.97 [0.97;0.98]	0.98 [0.98;0.99]	0.97 [0.97;0.98]
	5	0.82 [0.81;0.83]	0.85 [0.84;0.86]	0.88 [0.87;0.88]		0.86 [0.85;0.86]
	10	0.72 [0.70;0.74]	0.77 [0.75;0.78]			
Age						
15-44	1	0.99 [0.98;0.99]	0.98 [0.98;0.98]	0.99 [0.99;0.99]	0.99 [0.99;0.99]	0.99 [0.99;0.99]
	5	0.79 [0.79;0.80]	0.87 [0.87;0.88]	0.89 [0.89;0.89]		0.86 [0.86;0.87]
	10	0.69 [0.68;0.70]	0.78 [0.78;0.79]			
45-54	1	0.98 [0.98;0.98]	0.99 [0.98;0.99]	0.99 [0.99;0.99]	0.99 [0.99;0.99]	0.99 [0.99;0.99]
	5	0.85 [0.85;0.86]	0.88 [0.88;0.89]	0.92 [0.91;0.92]		0.89 [0.89;0.89]
	10	0.77 [0.77;0.78]	0.82 [0.81;0.82]			
55-64	1	0.97 [0.97;0.98]	0.98 [0.97;0.98]	0.99 [0.99;0.99]	0.99 [0.99;0.100]	0.98 [0.98;0.99]
	5	0.84 [0.83;0.84]	0.86 [0.86;0.87]	0.92 [0.92;0.92]		0.89 [0.89;0.89]
	10	0.74 [0.73;0.75]	0.79 [0.78;0.79]			
65-74	1	0.97 [0.97;0.98]	0.98 [0.98;0.99]	0.98 [0.98;0.98]	0.99 [0.99;0.99]	0.98 [0.98;0.98]
	5	0.83 [0.82;0.84]	0.87 [0.86;0.87]	0.89 [0.88;0.89]		0.87 [0.87;0.88]
	10	0.73 [0.72;0.75]	0.77 [0.76;0.78]			
75+	1	0.95 [0.95;0.96]	0.95 [0.95;0.96]	0.95 [0.94;0.95]	0.97 [0.96;0.97]	0.95 [0.95;0.96]
	5	0.80 [0.78;0.81]	0.81 [0.80;0.83]	0.81 [0.80;0.82]		0.81 [0.80;0.82]
	10	0.67 [0.65;0.70]	0.73 [0.71;0.76]			

Relativ overlevelse 5 år

Hyppigt forekommende cancersygdomme



Relativ overlevelse 5 år Brystkræft

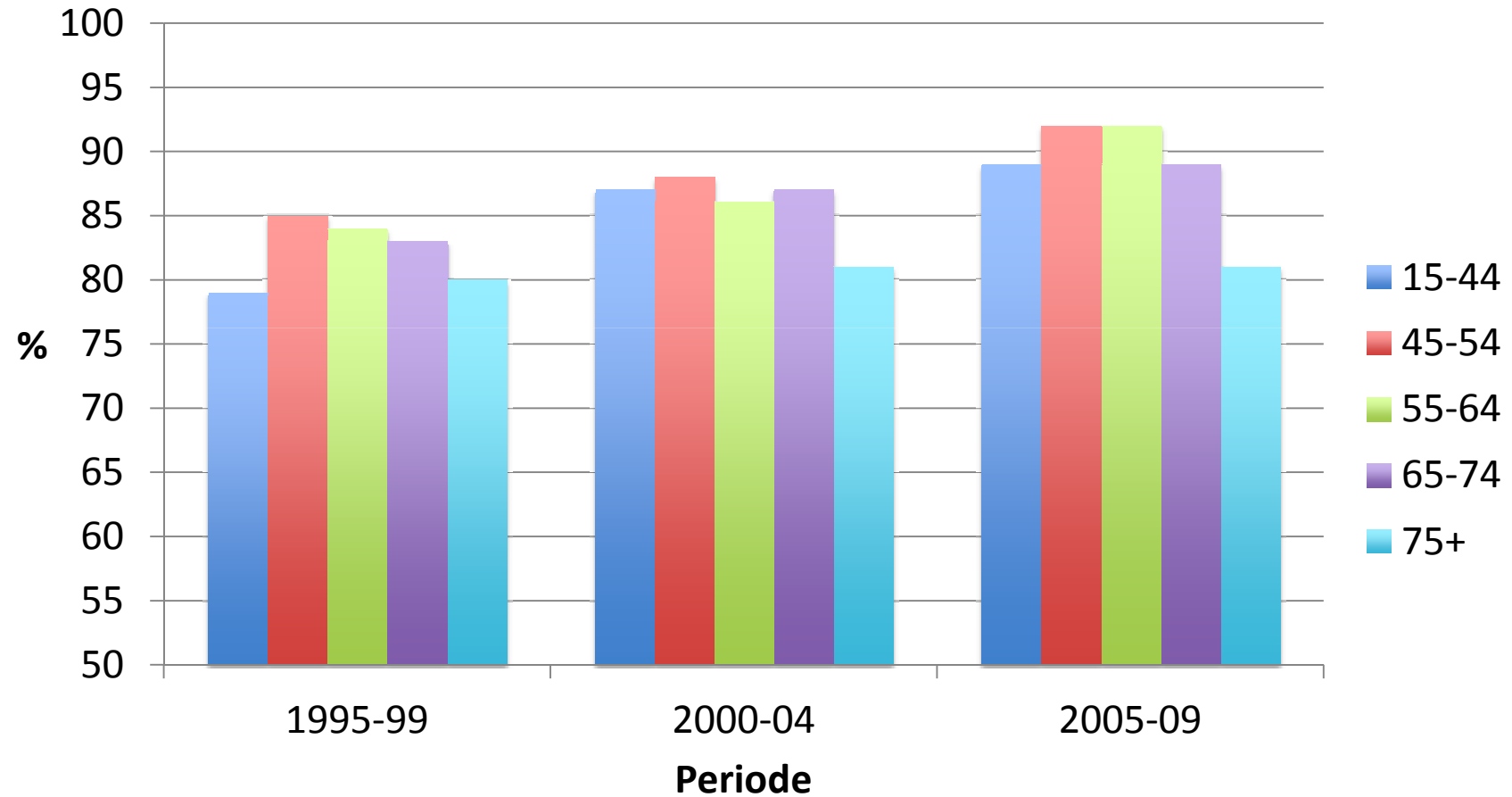


Table 4A. Relative Survival (95% CI).

		1995-1999	2000-2004	2005-2009	2010-2012	1995-2012
CCI						
0	1	0.98 [0.97;0.98]	0.99 [0.98;0.99]	0.99 [0.98;0.99]	1.00 [0.99;1.00]	0.99 [0.98;0.99]
	5	0.86 [0.85;0.87]	0.90 [0.89;0.91]	0.93 [0.92;0.94]		0.91 [0.90;0.91]
	10	0.78 [0.76;0.80]	0.84 [0.82;0.86]			
1	1	0.95 [0.93;0.96]	0.96 [0.95;0.97]	0.96 [0.95;0.97]	0.98 [0.97;0.99]	0.96 [0.96;0.97]
	5	0.73 [0.70;0.76]	0.81 [0.78;0.83]	0.82 [0.80;0.84]		0.81 [0.80;0.82]
	10	0.57 [0.53;0.61]	0.68 [0.64;0.71]			
2	1	0.92 [0.90;0.94]	0.93 [0.91;0.95]	0.95 [0.93;0.96]	0.96 [0.93;0.97]	0.94 [0.93;0.95]
	5	0.67 [0.62;0.71]	0.72 [0.69;0.75]	0.77 [0.74;0.80]		0.74 [0.72;0.76]
	10	0.50 [0.44;0.56]	0.59 [0.54;0.63]			
≥3	1	0.88 [0.83;0.91]	0.86 [0.83;0.89]	0.89 [0.87;0.91]	0.92 [0.89;0.94]	0.89 [0.87;0.90]
	5	0.57 [0.51;0.63]	0.51 [0.46;0.56]	0.57 [0.53;0.61]		0.57 [0.55;0.60]
	10	0.35 [0.28;0.41]	0.33 [0.28;0.38]			

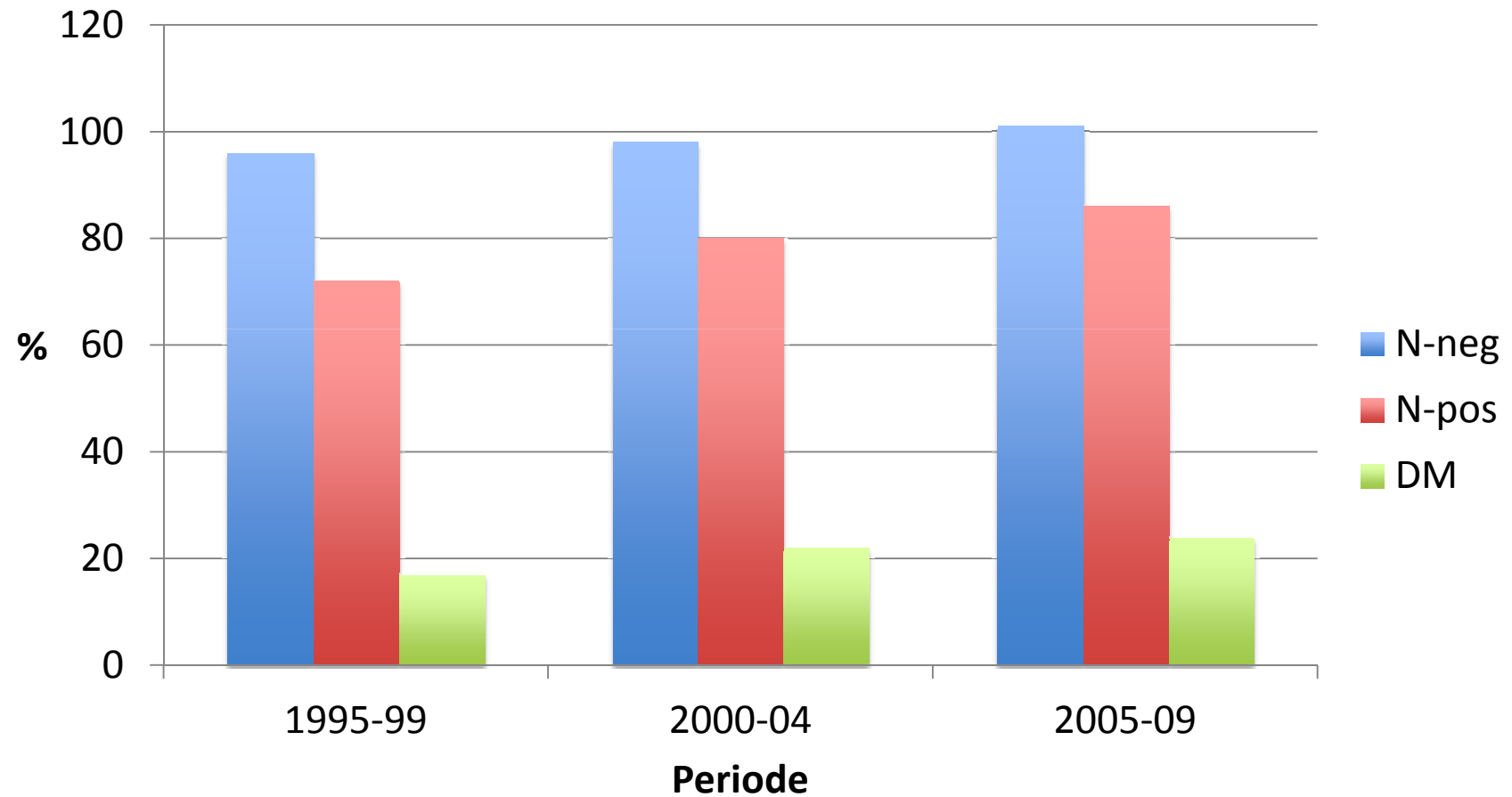
Table 4b 1-year, 5-year, and 10-year age-adjusted relative survival for breast cancer according to age for patients with CCI=0 (1995-2012)

Relative survival (95% CI)		Calendar period of breast cancer diagnosis				
		1995-1999	2000-2004	2005-2009	2010-2012	1995-2012
	Year					
Age						
15-44	1	99 (98-99)	99 (98-99)	99 (99-99)	100 (99-100)	99 (99-99)
	5	79 (79-80)	88 (87-88)	90 (90-90)		87 (86-87)
	10	69 (69-70)	79 (78-79)			
45-54	1	98 (98-98)	99 (99-99)	99 (99-99)	100 (99-100)	99 (99-99)
	5	86 (85-86)	89 (89-90)	92 (92-93)		90 (89-90)
	10	78 (78-79)	83 (83-84)			
55-64	1	98 (98-98)	98 (98-99)	100 (100-100)	100 (99-100)	99 (99-99)
	5	86 (85-86)	89 (88-89)	94 (93-94)		91 (90-91)
	10	76 (75-77)	82 (81-83)	90 (89-91)		
65-74	1	98 (98-99)	100 (99-100)	99 (99-100)	100 (99-100)	99 (99-100)
	5	88 (87-89)	91 (90-92)	93 (93-94)		92 (91-92)
	10	80 (79-82)	83 (82-84)			
≥75	1	97 (97-98)	97 (97-98)	97 (96-98)	99 (98-100)	98 (97-98)
	5	88 (85-89)	91 (89-93)	93 (91-95)		91 (90-92)
	10	80 (76-83)	90 (86-93)			

Abbreviations: CCI, Charlson Comorbidity Index. CI, confidence interval

Relativ overlevelse 5 år

Sygdomsudbredelse



Resumé

- Let stigende medianalder – ældre befolkning, men screening modsat effekt
- Stage migration i starten af nullerne – flere N+
- Screening medfører færre N+ fra slutningen af nullerne
- Underregistrering af patienter med dissemineret sygdom – kan være årsag til lavere komorbiditet i den tidlige periode

Resumé fortsat

- Overlevelsen gradvist forbedret stort set uanset stadium og alder
- Undtagelse
 - CCI ≥ 3
 - 75+
 - M1
- Relativ 5-års overlevelse
 - N0 101%
 - N+ 86%
 - N0-1 89%
 - LABC 46%
 - M1 24%

Resumé fortsat

- Relativ 5-års overlevelse
 - CCI 0 93%
 - CCI 1 82%
 - CCI 2 77%
 - CCI 3+ 57%
- Den dårligere relative overlevelse hos 75+ er knyttet til patienter med komorbiditet

Diskussion

Årsagerne til den dårligere overlevelse af danske patienter med brystkræft kan teoretisk bero på:

1. At der gives generelt dårligere behandling i DK
 - Følger internationale retningslinier – ingen sammenligninger af kvaliteten af behandling
 - Underbehandling af ældre og ved komorbiditet
2. At diagnosen stilles for sent
 - Den sene indførelse af mammografiscreening i DK
 - Den internationale benchmarking analyse, der viste at stadium for stadium er resultaterne i DK sammenlignelige
3. At der er lavere generel sundhedstilstand
 - Aktuelle resultater vedrørende relativ mortalitet antyder, at dette spiller ind

Konklusion

- Mortaliteten signifikant faldende i perioden 1996-2012
- Senere diagnostik og generel højere mortalitet i befolkningen er medvirkende årsager til dårligere prognose i DK
- Danske patienter med høj alder og betydende komorbiditet har forholdsvis dårligere prognose